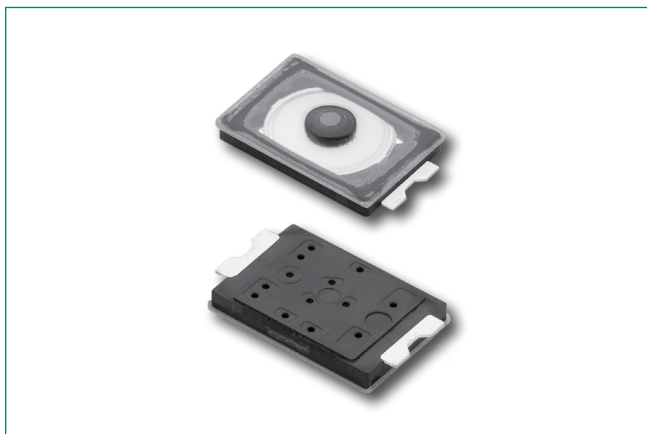


# TS-1290 (3\*2\*0.6)Series

## Ultra Low Profile Top Actuated



### Specifications

<b>Function</b>	Momentary action
<b>Contact Arrangement</b>	1 make contact = SPST, N.O.
<b>Terminals</b>	G type for SMT
<b>Travel</b>	0.13 mm
	In reels of 15,000 pieces Dimensions of reels according to EIA 481B External diameter 330 mm

### Electrical Characteristics

<b>Maximum Voltage</b>	15 VDC
<b>Maximum Current DC</b>	20 mA
<b>Dielectric Strength</b>	(50/60 Hz, 1 min) 250 Vrms
<b>Contact Resistance</b>	≤ 500 mΩ
<b>Insulation Resistance</b>	≥ 50 MΩ
<b>Bounce Time</b>	≤ 10 ms

### Environmental Characteristics

<b>Operating Temperature</b>	-40°C to 85°C
<b>Storage Temperature</b>	-40°C to 85°C

### Process

<b>Soldering</b>	This component is suited to the following methods: Infrared Reflow Soldering in accordance with IEC61760-1
------------------	---

### Description

The TS-1290 series ultra-low profile top actuated tactile is a reliable and long-lasting switch built to meet the specific needs of engineers creating the next generation of devices, including in-ear headphones and earbuds, wearable electronics and hearing aids. The switch has a 3.0 x 2.0 mm footprint, 0.6 mm thickness and high number of cycles.

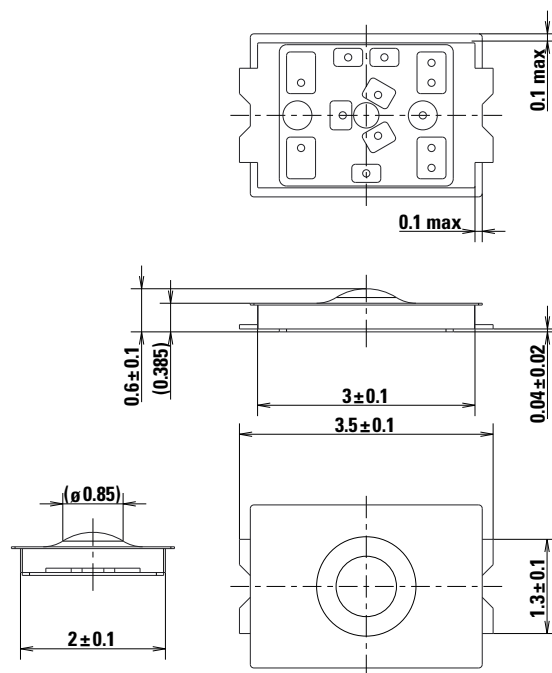
### Features & Benefits

- Small footprint 3.0 x 2.0 mm
- 0.6 mm thickness
- High number of cycle

### Applications

- Wearable electronics
- In-Ear headphones, Earbuds
- Mobile Phones
- Portable Electronics
- Hearing Aids

### Dimensions (mm)



### Schematic



### Recommended PCB Layout

